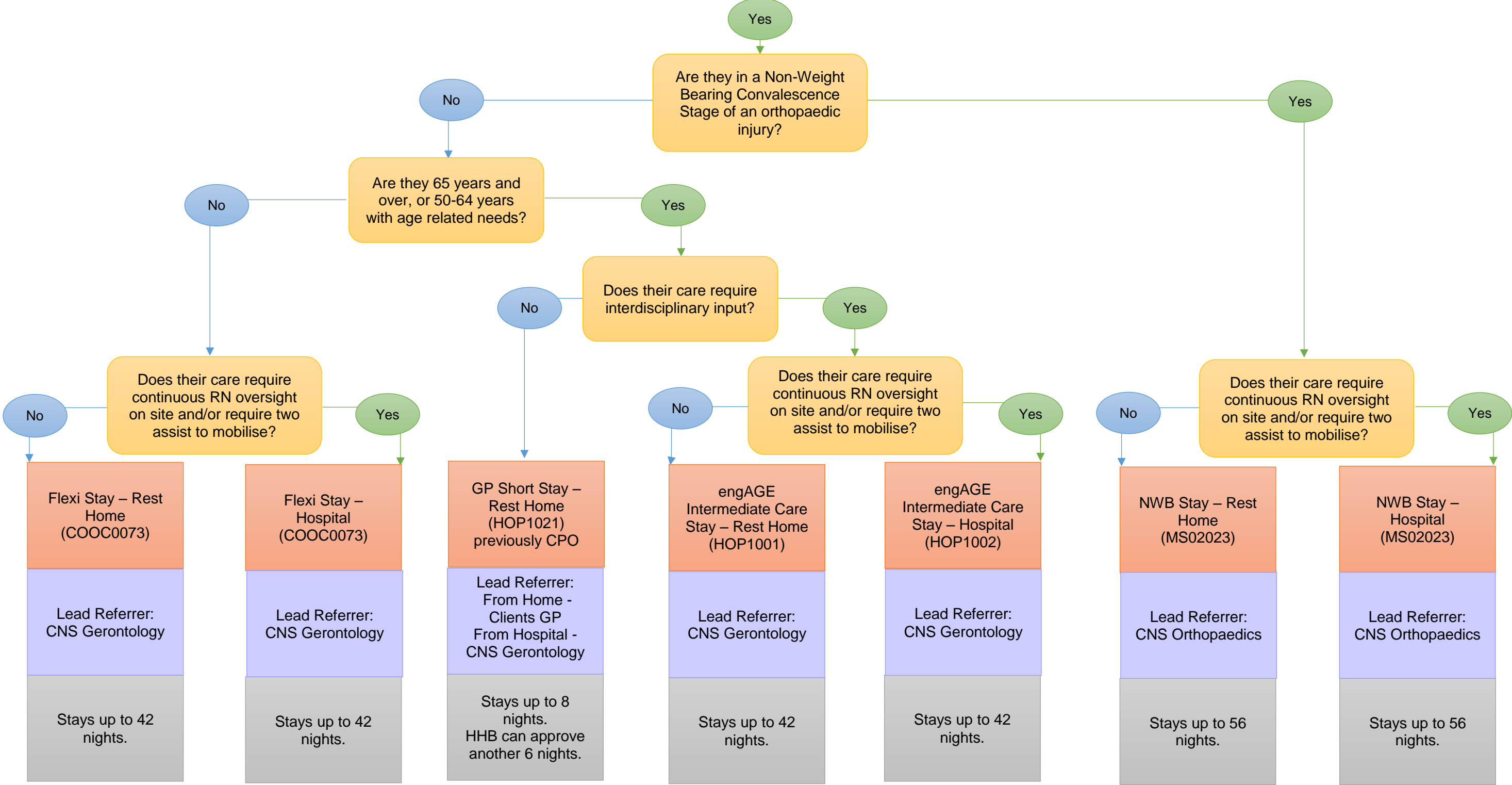


RESTORE in ARRC – short term residential care services

Standard room only in contracted ARRC facility, GP oversight funded via Health Hawke’s Bay CPO programme, with Service Users responsible for medication, transportation, and optional services. Not allocated by NASC.

- Is the service user:**
- presenting with a clinical need due to acute illness or function decline, that would benefit from a short residential stay as they are not ill enough for hospital but not well enough to cope at home; *and*
 - assessed as being medically stable (i.e. not anticipating any significant acute change), and their physical and/or cognitive issues is expected to improve during the stay; *and*
 - placement in an Age Related Residential Care (ARRC) setting appropriate; *and*
 - not requiring inpatient treatment or investigations; *and*
 - not eligible for permanent residential care or ACC funded support services.



Stays requiring additional nights than identified above, require prior approval by DHB funder. The Lead Referral and/or ARRC facility should email contracts@hbdhb.govt.nz providing supporting information for the extension request. Allocation of stays are subject to budget availability. Admission and discharge notification forms are to be sent to engageinarrc@hbdhb.govt.nz by the next working day. Generally admission forms are completed by the ARRC facilities when entries are from the community, and by the Lead Referrer when entries are from the hospital. It's the ARRC facilities responsibility to ensure admission forms have been submitted, as this sets up the allocation for invoicing against the agreement.