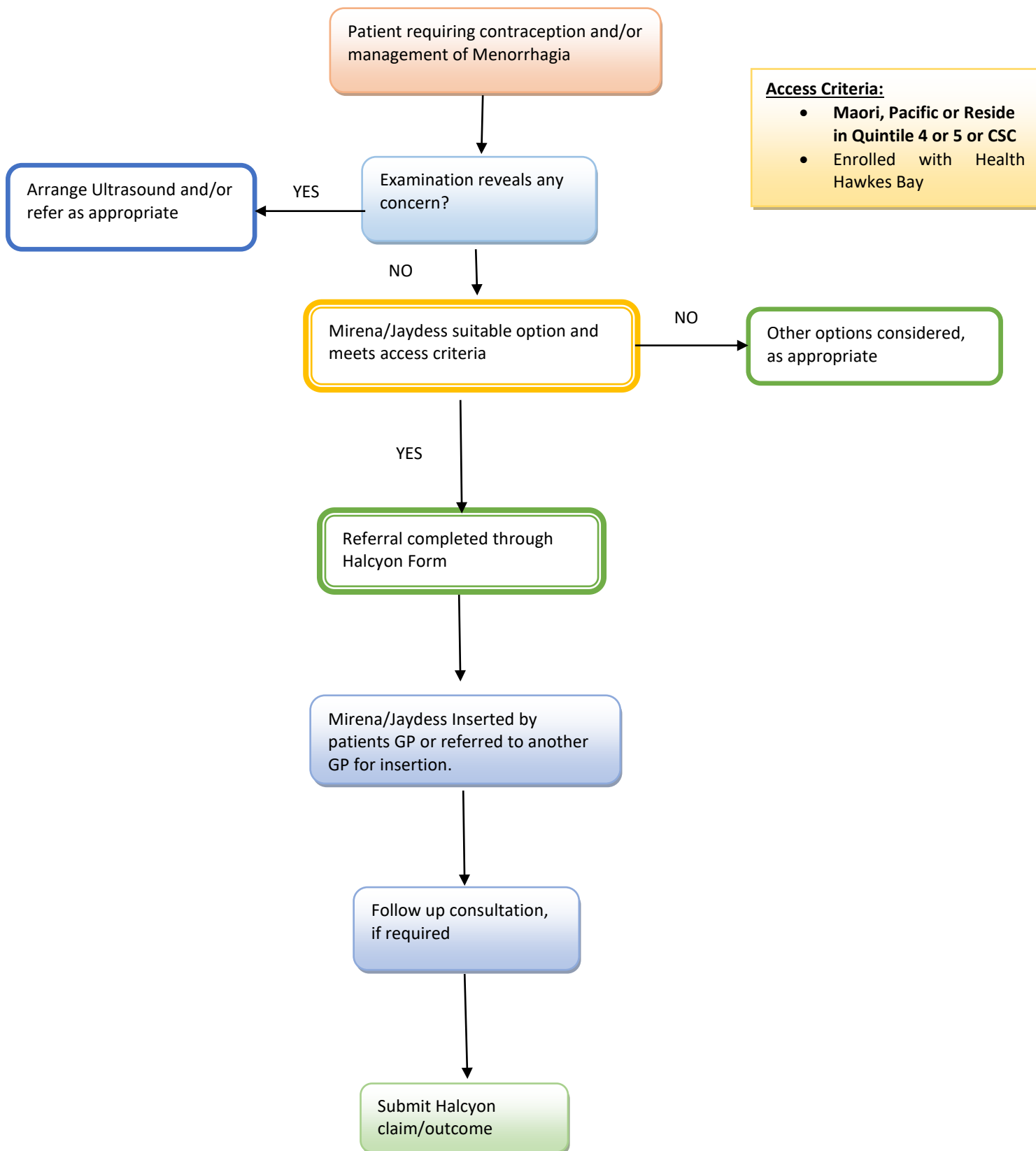


## LARC Pathway for Mirena/Jaydess



## LARC Pathway for Mirena/Jaydess

### Purpose:

This pathway funds the insertion cost of Mirena or Jaydess for Contraception and Menorrhagia for eligible patients according to access criteria below.

### Eligibility Criteria:

- Enrolled with Health Hawkes Bay
- Maori or Pacific or
- Resides in Quintile 4 or 5 or
- Community Services Card Holder

### Funding:

- Referral and Claiming is through the **Halcyon Provider Portal > Coordinated Primary Options > New CPO Referral > LARC/Menorrhagia for Mirena/Jaydess**

### Pathway:

1. Complete the electronic referral form through the Halcyon Provider Portal.
2. If the GP/NP does not provide this service, patients will need to discuss this with their GP and be referred to another GP.
3. Patients pay for the initial visit to the GP/NP in the same way they do for all CPO pathways. This includes referral, swabs etc
4. Invoice through the Halcyon form. There is a set fee for the cost which includes the cost of insertion, materials and follow-up consultation, if required.